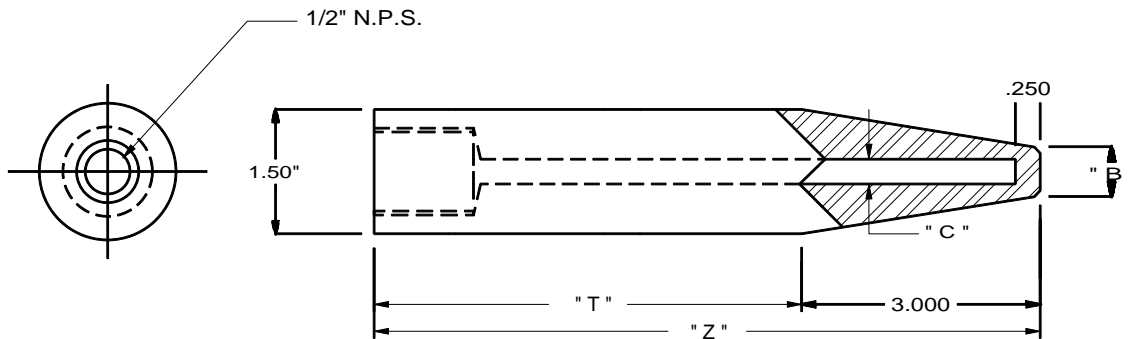


SENSOR THERMOWELLS

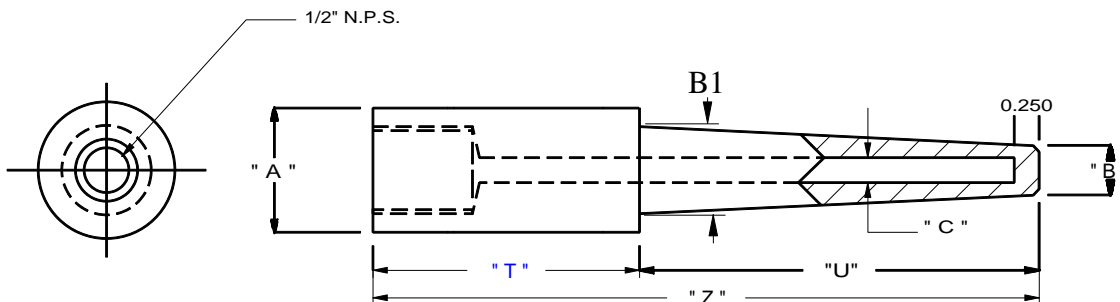


WELD IN - BARSTOCK

PART NO.	" A " DIA.	" B " WELL DIA.	" C " BORE
310	1.50"	1.0"	.500"
311	1.50"	.88"	.437"
312	1.50"	.75"	.390"
313	1.50"	.62"	.265"
318	1.50"	1.0"	.718"

HOW TO ORDER:

STANDARD MATERIAL IS 304 S/S



WELD IN, SOCKET WELD - BARSTOCK

PART NO.	" A " * PIPE SIZE	" B " STEM DIA.	" B1 " STEM DIA.	" C " BORE	" T " STANDARD
415	PER Pipe Size	.625"	.88"	.500"	1.750"
414	PER Pipe Size	.625"	.88"	.437"	1.750"
413	PER Pipe Size	.625"	.88"	.390"	1.750"
412	PER Pipe Size	.625"	.88"	.265"	1.750"
419	PER Pipe Size	1.0"	1.10"	.718"	1.750"

HOW TO ORDER:

"A" DIA. FOR .75" NPT= 1.060"
 "A" DIA. FOR 1" NPT= 1.38"

TEMTEX Temperature Systems, Inc

19053 W. US HWY 82, SHERMAN, TEXAS 75092
 (800) 527-2009 - (903) 813-1500 - FAX (903) 813-1950
 e-mail: temtex@temtex.net WWW.TEMTEX.NET